

INSTALLATION GUIDE FOR THE TYPE AGW ROOT MOUNTED COMPOSITE LIGHTING COLUMN.

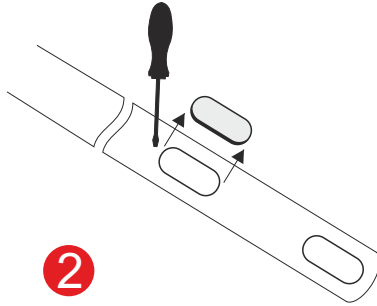
Workplace health and safety regulations

The installation and assembly works should be carried out as set forth in the Regulation of the Minister of Infrastructure of 6 February 2003 on the workplace health and safety during construction works (Journal of Laws No. 47, item 401, of 19 March 2013).



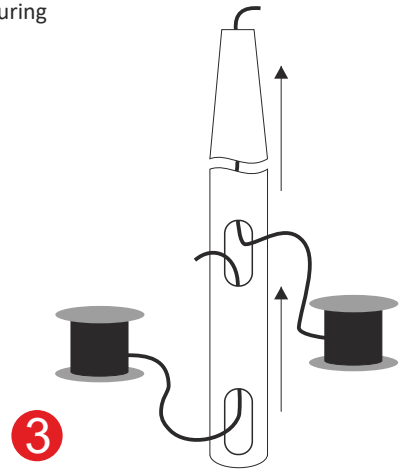
1

Prepare a pit large enough to accommodate the column root, as recommended in the table on page 2.



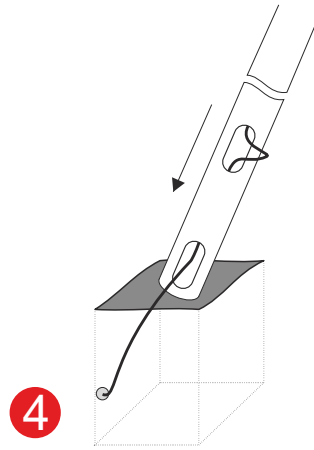
2

Unscrew the inspection flap of the composite column.



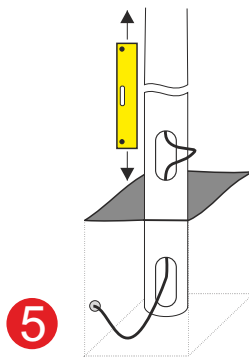
3

Insert the power cable into the bottom hole of the column and pass it all the way up to the column finial.



4

Place the reinforced column in the pit.



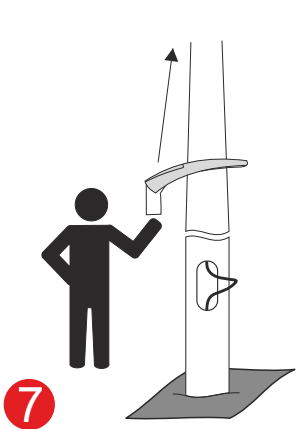
5

Put the column upright and make sure it is perfectly level



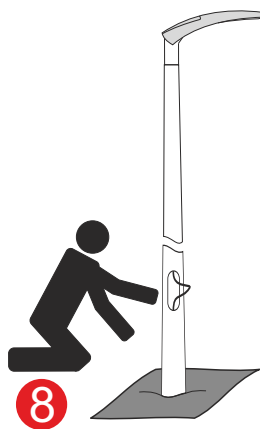
6

Cover up the pit with native soil, thickening it layer by layer with a mechanical earth rammer.



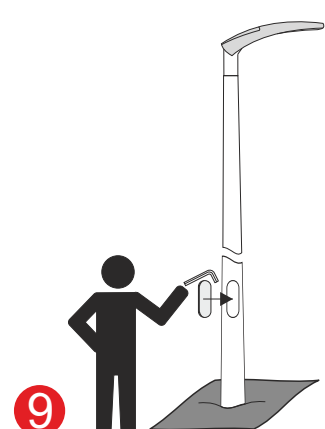
7

Mount a bracket or LED luminaire (detailed instructions for the assembly and installation of LED luminaires are supplied together with the product).



8

Connect the power cable to the power supply.



9

Screw the inspection flap using an Allen key. The column is ready to use.

Manufacturer's recommendations:

Pit depth depending on the column height.

| Type | Nominal height H [m] | Root height G [m] | Total height CH [m] |
|---------|----------------------|-------------------|---------------------|
| AGW-003 | 3 | 1.0 | 4.0 |
| AGW-004 | 4 | 1.0 | 5.0 |
| AGW-005 | 5 | 1.0 | 6.0 |
| AGW-006 | 6 | 1.2 | 7.2 |
| AGW-007 | 7 | 1.2 | 8.2 |
| AGW-008 | 8 (150) | 1.2 | 9.2 |
| AGW-008 | 8 (192) | 1.5 | 9.5 |
| AGW-009 | 9 | 1.5 | 10.5 |
| AGW-010 | 10 | 1.5 | 11.5 |